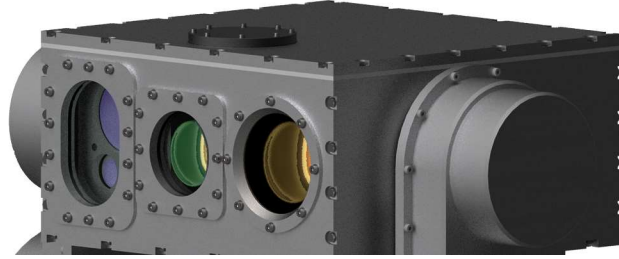


Advanced Thermal Imaging

MLT-TDR-10



MLT-TDR-10

THERMAL CAMERA

Sensor type	Cooled Thermal Sensor
Resolution	640 x 512, 15 μ m InSb FPA
Frame Rate	Up to 60Hz
Spectral response	3 - 5 μ m
Sensitivity	< 20 mK @ 50% Well Fill Capacity

DAY CAMERA

Sensor type	1/2.8" CMOS Sensor Full HD 1080p
Optical Zoom	20x (up to 240x With Digital Zoom)

LASER RANGE FINDER

Measurement Range	Up to 10Km
Measuring Rate	0.5 - 10Hz
Wavelength	1550nm Eye Safe
Laser Life time	More than 500,000 measurements

CONTROL STATION

Monitor	19"XGA Display
User Input	Joystick and Touchscreen
Recording	Video and Photo recording, Day and/or Thermal Camera
Modes	Manual or Auto Tracking
Controls	IR Polarity, IR Filter, Contrast, Brightness, Target Tracking, Zoom
On-screen Indicators	Polarity, Zoom level, Digital magnetic compass bearing, LRF distance

POWER

Ship Power	115V or 220V AC, 50/60Hz
UPS Protection	Double Conversion

ENVIRONMENTAL

Operation temp	-25°C to +55°C
Standard	MIL-STD-810G
Waterproof	IP67
Material	Metal Anodized
Wind Resistance	120km/h (11 Beaufort)

STANDARD FEATURES

Control Stations	Master and Slave
Pan Tilt Range	360° horizontal, -90° / +30° vertical
Pan Tilt Motion	Joystick Control or Stabilized

OPTIONAL FEATURES

Control Station	Image and related information (Slave mode)
Interoperability	Radar and Fire Control System (FCS)
GPS	For Target Positioning through LRF & DMC

DIMENSIONS

Sensor Head Weight	5900 gr
Pan-tilt Weight	9000 gr
Size (L x W x H)	265 x 285 x 138 mm

